

**BlueScope's Environmental Product Declarations (EPDs)** respond to segment demands for credible, product-specific environmental information

# epd

**BlueScope's Environmental Product Declarations (EPDs)** respond to segment demands for credible, product-specific environmental information from building owners, architects, design engineers and sustainability specialists who are at the forefront of developing a better built environment for Australia.

**BlueScope have released a range of EPDs** providing an unprecedented level of transparency for environmental impacts across a range of impact categories. The EPDs for COLORBOND® steel, XLERPLATE® steel, Hot Rolled Coil and Welded Beams and Columns are registered under The Australasian EPD® Programme. BlueScope will continue to develop even a broader range of products based on product and segment demand.

EPDs are expressions of commitment to long-term sustainability, transparency and positive

environmental stewardship. The information contained in EPDs is quantified and verified. BlueScope is committed to understanding and improving the environmental, social and economic performance of our production processes.

**What is an EPD?**

An EPD is a transparent and verified disclosure that tells the life cycle story of a product's environmental impacts. Similar to the familiar nutrition label for food, an EPD contains all of the environmental information needed for a product, in one place, and in a meaningful and credible manner.

The information provided ranges from simple recycling data to in-depth life cycle assessment (LCA) results. BlueScope's EPDs are product-specific so you have the confidence of knowing the true impacts of the product you have specified. Industry-average EPDs do not directly relate to a specific product.

**How do I use an EPD?**

EPDs help to earn points for Green Star credits in the sustainable products and LCA of buildings credits. Specifying BlueScope products with EPDs can be a fast, cost-effective means to increasing Green Star points for your project.

BlueScope EPDs are verified to be compliant with International Standard ISO 14025 and the best practice European Standard EN 15804. They also provide optional environmental data to help enable BlueScope's customers achieve further credits under Green Star.

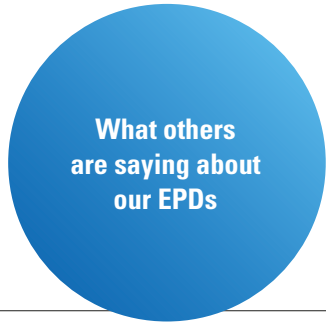
EPDs are best used to support whole-of-life assessment for end uses such as buildings, infrastructure and their components, as well as everyday materials. Using product-specific EPDs in the context of a whole structure or development enables environmental optimisation and progress towards a better built environment.



Inspired by a volcanic rock called a 'thunder egg', the design of Ivanhoe Grammar School's Science and Senior Years Centre uses COLORBOND® steel in the colour Monument® for its outer skin to contrast with the wonderland of colours inside.

Photography John Gollings

# What others are saying about BlueScope's EPDs



“...it is a great example of what can be achieved through commitment to release independently verified, reliable, product-specific information.”

“BlueScope Steel has gone to great lengths to map energy, material and emission flows across its Port Kembla site in an effort to accurately calculate the environmental performance of its products. The company’s commitment to achieving a high quality LCA in line with best practice standards is commendable. For start2see, BlueScope’s commitment was further evidenced by a transparent and co-operative approach to the verification process.”

**Rob Rouwette**

EPD third party verifier, start2see

“We are proud that BlueScope invited thinkstep to support them moving to the next level of product transparency. BlueScope’s EPDs truly illustrate that verified environmental information can be produced by industry in-house by using the right tools - like thinkstep’s LCA software and GaBi database – coupled with expert guidance.”

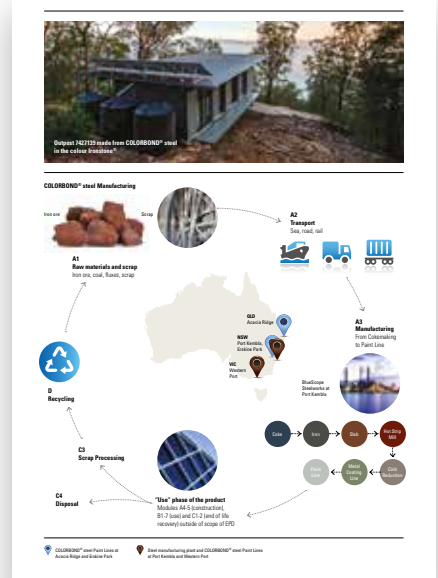
**Barbara Nebel**

Managing Director thinkstep Australasia

“We are very pleased that BlueScope published the first Australian EPD under our programme, and that it is a great example of what can be achieved through commitment to release independently verified, reliable, product-specific information.”

**Andrew Marjoribanks**

Board Member and Spokesperson, The Australasian EPD® Programme



[steel.com.au/epd](http://steel.com.au/epd)  
Learn more about BlueScope EPDs

1800 064 384  
Call BlueScope Steel Direct

