



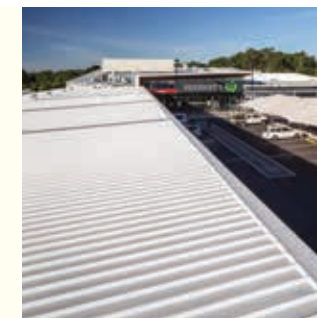
# COOLMAX<sup>®</sup>

LOW SOLAR ABSORPTANCE STEEL FOR ROOFING





# COOLMAX<sup>®</sup>



Roof colour: Whitehaven<sup>®</sup>

## EARN RATING POINTS WITH GREEN STAR, IMPROVE NABERS RATINGS, AND HELP MITIGATE THE IMPACT OF URBAN HEAT ISLANDS

Using COLORBOND<sup>®</sup> Coolmax<sup>®</sup> steel may help mitigate the impact of Urban Heat Islands (UHI). Elevated temperatures from UHI relative to surrounding countryside, particularly during summer, can affect a community's environment and quality of life.<sup>5</sup>

In both the Green Star Design & As Built and Green Star Communities tools there is provision points under the Urban Heat Island Credit. This allows 1 point for high solar reflectance roofing and COLORBOND<sup>®</sup> Coolmax<sup>®</sup> steel in Whitehaven<sup>®</sup> meets both the current and aged SRI provisions.<sup>6</sup>

In addition, COLORBOND<sup>®</sup> Coolmax<sup>®</sup> steel is an enabler to improve NABERS ratings when used appropriately in combination with other factors.<sup>7</sup>



Roof colour: Whitehaven<sup>®</sup>

## MAY HELP TO KEEP SOLAR PANELS COOLER

COLORBOND<sup>®</sup> Coolmax<sup>®</sup> steel may contribute to the production of electricity by solar panels by helping to keep solar panels cooler and delivering more sunlight to the panels than other BlueScope roofing products, particularly for bi-facial solar panels that rely on reflectance of light to the back face of the panel to achieve high performance.

## MAY HELP REDUCE ENERGY COSTS AND UPFRONT AIR CONDITIONING EQUIPMENT COSTS

Increasing energy costs are a concern for most commercial and industrial building owners and tenants. So it's reassuring to know a roof made from COLORBOND<sup>®</sup> Coolmax<sup>®</sup> steel in the colour Whitehaven<sup>®</sup> could help reduce the annual cooling energy costs of your building.<sup>2</sup>

The use of COLORBOND<sup>®</sup> Coolmax<sup>®</sup> steel in roofing may also reduce the up-front, capital cost of air-conditioning equipment<sup>4</sup>. It could also help reduce the peak cooling load on your building, which may enable you to downsize the capacity of the air-conditioning equipment.<sup>4</sup>



Roof colour: Whitehaven<sup>®</sup>

## A ROOFING PRODUCT DESIGNED TO PROVIDE AND MAINTAIN HIGH SOLAR REFLECTANCE

COLORBOND<sup>®</sup> Coolmax<sup>®</sup> steel is a tailored product in one very cool colour Whitehaven<sup>®</sup> with high solar reflectance. Nominal Solar Reflectance<sup>1</sup> = 0.77. Solar Reflectance Index (SRI)<sup>1</sup> = 95.

A nominal solar reflectance of 0.77 means it reflects 77% of the sun's heat, which may help to reduce roofing temperatures and keep the building cooler.<sup>2</sup>

Best of all, COLORBOND<sup>®</sup> Coolmax<sup>®</sup> steel delivers all the quality, durability, ability to resist dirt and maintain solar reflectance and roofing warranty<sup>3</sup> offer of COLORBOND<sup>®</sup> steel.



Roof colour: Whitehaven<sup>®</sup>





Roof colour: Whitehaven®



### COLORBOND® Coolmax® steel

A tailored product designed to provide and maintain high solar reflectance.

# COOLMAX®

## 001

### A TAILORED ROOFING PRODUCT

COLORBOND® Coolmax® steel is a tailored product in one very cool colour Whitehaven® with high solar reflectance. Nominal Solar Reflectance<sup>1</sup> = 0.77. Solar Reflectance Index (SRI)<sup>1</sup> = 95.

A nominal solar reflectance of 0.77 means it reflects 77% of the sun's heat, which may help to reduce roofing temperatures and keep the building cooler.<sup>2</sup>



Roof colour: Whitehaven®

## 002

### TESTED, TESTED AND THEN TESTED AGAIN

COLORBOND® Coolmax® steel has undergone real world exposure testing and accelerated laboratory testing at BlueScope sites in Australia. It is also manufactured in Australia and compliant with all relevant Australian Standards.

## 003

### WARRANTIES FOR PEACE OF MIND

When you purchase COLORBOND® Coolmax® steel you are buying products made and backed by BlueScope, one of Australia's largest manufacturers. BlueScope offers a variety of warranties of up to 36 years for peace of mind.<sup>3</sup>



Roof colour: Whitehaven®

## 004

### PROJECTS SPECIFIED AND USED ACROSS AUSTRALIA

COLORBOND® Coolmax® steel is being specified and used across Australia from the Harvey Bay Shopping Centre in Queensland, DHL Warehouse in New South Wales to Deakin University in Victoria and the Broome Recreation and Aquatic Centre in Western Australia.

FOR MATERIALS, COLOUR, DESIGN AND SPECIFICATION TOOLS, VISIT [STEEL.COM.AU/COOLMAX](http://STEEL.COM.AU/COOLMAX) OR CALL 1800 064 384

TO APPLY FOR AND ACTIVATE A WARRANTY, VISIT [BLUESCOPESTEEL.COM.AU/WARRANTIES](http://BLUESCOPESTEEL.COM.AU/WARRANTIES)

1. Nominal values based on new product. SRI determined in accordance with ASTM E1980-11. Solar reflectance measured in accordance with ASTM E 903-96, standard test method for solar absorptance, reflectance and transmittance of materials using integrating spheres. 2. Compared to conventional roofing materials of lower reflectance index (SRI), such as ZINCALUME® steel and all other roofing materials in the COLORBOND® steel range. Any savings and or the extent to which a building is cooler may vary and depend upon the particular circumstances of your building, including building location, level of insulation, location of air-conditioning when installed, building shape, building function and environmental factors. For further information refer to Stockland case study <http://steel.com.au/colorbond-coolmax-steel>. 3. Warranty subject to application and eligibility criteria. For full terms and conditions and to determine the eligibility of your project for the warranty visit [www.bluescopesteel.com.au/warranties](http://www.bluescopesteel.com.au/warranties) or call BlueScope on 1800 064 384. 4. For more information about potential savings visit <http://steel.com.au/coolmaxcalculator>. 5. For more information on UHI visit <http://www.epa.gov/heatisland/about/index.htm>. 6. Green Star rating system - <http://new.gbca.org.au/green-star/rating-system/>. 7. NABERS - [www.nabers.gov.au](http://www.nabers.gov.au). COLORBOND®, Coolmax®, Thermatech®, Activate®, BlueScope, the BlueScope brand mark and ® colour names are registered trade marks of BlueScope Limited. ™ colour names are trade marks of BlueScope Steel Limited. © 2017 BlueScope Steel Limited ABN 16 000 011 058. All rights reserved.

